

Section 1 - Section 1

Question No.1

4.00

Bookmark



Name the microfossil in the above figure

- Foraminifera
- Radiolarian
- Pollen grain
- Conodonts

Question No.2

4.00

Bookmark

When the bus was at full speed, its brakes failed and an accident was \_\_\_\_\_

- essential
- undeniable
- inevitable
- infallible

Question No.3

4.00

Bookmark

Greywacke typically exhibits

- Herringbone cross-bedding
- Flaser bedding
- Graded bedding
- Torrential bedding

Question No.4

4.00

Bookmark

Which was the warmest epoch of the Cenozoic?

- Eocene
- Paleocene
- Oligocene
- Miocene

Question No.5

4.00

Bookmark

In contact metamorphism the source of increased temperature and pressure is \_\_\_\_\_

- a local intrusive heat source
- impact metamorphism
- the increase in temperature with increasing depth of burial
- due to increased rate of radioactive decay

**Question No.6**

4.00

**Bookmark** 

The specific gravity of a powdered mineral can be determined with the help of

- Walker's Steel Yard
- Pycnometer
- Chemical balance
- Jolly's spring balance

**Question No.7**

4.00

**Bookmark** 

We must always try to adapt ourselves \_\_\_\_\_ our circumstances.

- to
- in
- by
- with

**Question No.8**

4.00

**Bookmark** 

Diamond bearing conglomerates of central India underlie \_\_\_\_\_

- Bhandar series
- Kaladgi series
- Sakoli series
- Saline series

**Question No.9**

4.00

**Bookmark** 

Diagenesis of organic matter forms ----

- Dry Gas
- Gas
- Oil
- Kerogen

**Question No.10**

4.00

**Bookmark** 

The term pH stands to

- Pure Hydrogen
- Per Hydrogen ion
- Puissance de Hydrogen
- Potential Hydrogen

**Question No.11**

4.00

**Bookmark** 

A limestone composed entirely of organic detritus is referred as

- Encrinite
- Coquina
- Oolite
- Spargenite

**Question No.12**

4.00

**Bookmark** 

This pup is very naughty. It is always \_\_\_\_\_ some mischief or the other.

- out for
- up to
- in for
- up at

**Question No.13**

4.00

**Bookmark** 

The path finder element for exploration for gold deposits is \_\_\_\_\_

- Arsenic
- Silver
- Nickel
- Antimony

**Question No.14**

4.00

Bookmark

Gravity fault are formed under \_\_\_\_ regime

- Shear
- Compressive force
- Effect of torsion forces
- Tensile stress

**Question No.15**

4.00

Bookmark

\_\_\_\_\_ is a satellite sensor.

- AVIRIS
- HYPERION
- LISS IV
- LISS III

**Question No.16**

4.00

Bookmark

Diamond in Kimberlite and Corundum in Nepheline syenite are examples of\_\_

- Injected deposit.
- Disseminated deposit
- Segregated deposit
- Pegmatitic deposit

**Question No.17**

4.00

Bookmark

Which type of pressure will result in the alignment of metamorphic minerals?

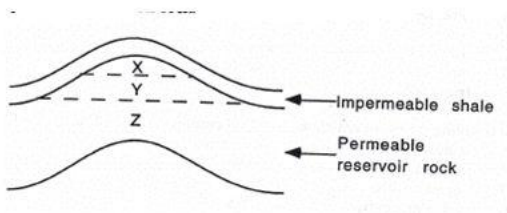
- contact pressure
- chemical pressure
- confining pressure
- directed pressure

**Question No.18**

4.00

Bookmark

Reservoir rock containing \_\_\_\_\_ in the pore space of XYZ layers find the correct content in the pore spaces of XYZ layers



- X-Water/Y-gas/Z-Oil
- X-water/Y-Gas/Z-Oil

- X-Water/Y-Gas/Z-Sil
- X-Gas/Y-Oil/Z-Water
- X-Oil/Y-water/Z-Gas

**Question No.19**

4.00

Bookmark

*In the following question, the first two words (given in italics) have a definite relationship. Choose one word out of the given four alternatives which will fill the blank space and show the same relationship with the third word as between the first two.*

*Hear* is to *Deaf* as *Speak* is to .....?.....

- Dumb
- Listen
- Talkative
- Silent

**Question No.20**

4.00

Bookmark

In which type of formation, the capillary rise will be high?

- Medium sand.
- Clay
- Gravel
- Loam.

**Question No.21**

4.00

Bookmark

Find the odd one out?

- Silkworm: Sericulture
- Fish : Pisciculture
- Birds : Horticulture
- Bees : Apiculture

**Question No.22**

4.00

Bookmark

The magnitude of gravity on the earth's surface depends on

- density variations in the subsurface
- latitude, elevation and topography
- latitude, elevation, topography, earth tides and density variations in the subsurface
- latitude, elevation, topography and earth tides.

**Question No.23**

4.00

Bookmark

Which of the following isotopes is NOT a radioisotope?

- Sulphur-35
- Carbon-14
- Carbon-13
- Tritium

**Question No.24**

4.00

Bookmark

Correct the error in the italicized part of the sentence by choosing the most appropriate option.

Leaving aside little room for misinterpretation, the senior politician offered clarifications about his role in the party elections.

- Leaving less room for
- Leaving little room for
- Leaving for little room to
  
- Having left less room for

**Question No.25**

4.00

Bookmark

Limestone and chalk beds are often derived from the shells of

- foraminifera.
- radiolarians
- dinoflagellates
- diatoms

**Question No.26**

4.00

Bookmark

The thickest coal seam in India is;

- Jaharia
- Raniganj
- Bokaro
- Singrauli

**Question No.27**

4.00

Bookmark

The tendency for variations in current velocity to segregate sediments based on particle size is called

- metamorphism
- compaction
- sorting
- lithification

**Question No.28**

4.00

Bookmark

Which is the fundamental step in image processing?

- image enhancement
- image acquisition
- filtration
- image restoration

**Question No.29**

4.00

Bookmark

The geochemical character of an element is governed by the----

- number of proton in the nucleus
- number of neutrons in the nucleus
- number of isotopes in nucleus
- electronic configuration of its atoms.

**Question No.30**

4.00

Bookmark

Folds with a pair of converging axial surfaces and having a square hinge zone are known as

- Similar folds
- Box folds
- Parallel
- Overturn folds

**Question No.31**

4.00

Bookmark 

Which of the following sedimentary environments is characterized by sand, gravel and mud?

- deep marine
- alluvial fans
- active margin beach
- glacial

**Question No.32**

4.00

Bookmark 

Which of the wavelength is useful for imaging from a satellite in cloud-covered condition?

- 4 cm
- 4mm
- 0.4nm
- 4nm

**Question No.33**

4.00

Bookmark 

Incohesive rock containing angular rock fragments set in a fine grained matrix is referred as

- Cataclastics
- Breccia
- Gouges
- Mylonites

**Question No.34**

4.00

Bookmark 

Batholiths are always associated with

- Folds and faults
- Earth zones
- Orogenic belt
- Island arcs

**Question No.35**

4.00

Bookmark 

The altitude of LANDSAT satellite is

- 900Km
- 600Km
- 1200Km
- 800Km

**Question No.36**

4.00

Bookmark 

If Road is coded as WTFI, what is the code for BEAT

- GJFY
- HIGZ
- DEFG
- ABCD

**Question No.37**

4.00

Bookmark 

Which metals may be obtained from the stagnate ore mineral?

- Zinc and silver.
- Copper and Tin.
- Copper and zinc.
- Copper and Tungsten.

**Question No.38**

4.00

Bookmark 

Compressibility can be described as reciprocal of

- Young Modulus

- Young modulus
- Bulk modulus
- Poisson Ratio
- Rigidity modulus

**Question No.39**

4.00

Bookmark

Extremely large scale lithostratigraphic units bounded by transgressive-regressive unconformities are called

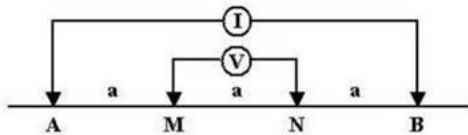
- facies
- cratonic sequences
- mobile belts
- Super groups

**Question No.40**

4.00

Bookmark

Identify the type of geophysical method



- magnetic
- Schlumberger
- Gravity
- Wenner

**Question No.41**

4.00

Bookmark

Which of the following metamorphic rocks forms in the forearc of a subduction zone?

- Gneiss
- Amphibolite
- Quartzite
- Blueschist

**Question No.42**

4.00

Bookmark

The deposition of amorphous silica layer by layer produces

- Liesegang banding
- Cockade structure
- Comb structure
- Geodes

**Question No.43**

4.00

Bookmark

Exhausted: Tired

- Depressed : Sad
- Arrogant: Docile
- Considerate: Rude
- Progressive: Regressive

**Question No.44**

4.00

Bookmark

A man makes 150 pots per minute. If 30 pots are packed in a case how many cases will be made ready by the Man in one hour?

- 200
- 250
- 300

**Question No.45**

4.00

Bookmark

Melange deposits are associated with

- transform boundaries
- Convergent boundaries
- subduction margins
- divergent boundaries

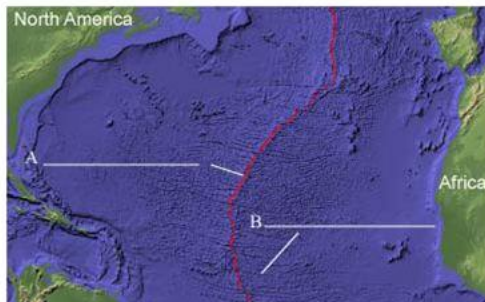
**Question No.46**

4.00

Bookmark

On the following illustration identify the features A and B

On the following illustration identify the features A and B



- Mid-Atlantic Ridge
- Carls Ridge
- Mid Oceanic Ridge
- East Pacific Ridge

**Question No.47**

4.00

Bookmark

What may be the maximum angle of wind ward slope and Leeward slope in a sand dune?

- 20° and 60°
- 5° and 30°
- 10° and 40°
- 15° and 50°

**Question No.48**

4.00



A dendritic drainage pattern will tend to develop in regions

- along the flanks of isolated volcanoes
- of flat-lying sedimentary rocks
- Underlain by regularly spaced joints
- Of folded rocks

**Question No.49**

4.00

Bookmark 

In petroleum exploration, the Biosurfactant is -----

- variety of metabolic products
- Variety of Kerogen
- Types of sulfur
- Type of mud

**Question No.50**

4.00

Bookmark 

During the Cambrian, most of the continents were-----

- together in one landmass
- dispersed around polar regions
- dispersed in low latitude regions
- covered by ice

**Question No.51**

4.00

Bookmark 

Choose the synonym of the italicized word. Many cities were *incinerated* during the war.

- attacked
- burnt
- destroyed
- bombed

**Question No.52**

4.00

Bookmark 

Which type of geophysical prospecting method is used for direct exploration of chromite?

- Resistivity
- Magnetic
- Seismic
- Gravity

**Question No.53**

4.00

Bookmark 

The Isometric system is characterized by

- 3 axes of 4 fold symmetry
- 6 axes of 5 fold symmetry
- 2 axes of 4 fold symmetry
- 4 axes of 3 fold symmetry

**Question No.54**

4.00

Bookmark 

\_\_\_\_\_ is an example of a shoreline/transitional depositional environment

- Littoral
- Lagoon
- Delta
- Shelf

**Question No.55**

4.00

Bookmark 

\_\_\_\_\_ is a useful statistic to calculating goodness of fit

- Chi-square test
- Fourier analysis

- f-test
- Normal distribution

**Question No.56**

4.00

Bookmark

Why do Mercury and the Moon lack an atmosphere?

- They are cold that all their gases have frozen into deposits below their surface.
- They are small that their gravity is too weak to retain an atmosphere.
- They formed after all the gas had been used up.
- They formed before the solar nebula had captured any gas.

**Question No.57**

4.00

Bookmark

**Statement:** The Company has recently announced a series of incentives to the employees who are punctual and sincere.

**Assumptions:**

I.Those who are punctual will get motivated.

II. The Productivity of the company may increase.

- If only assumption I is implicit
- If only assumption II is implicit
- If both I and II are implicit
- If neither I nor II is implicit

**Question No.58**

4.00

Bookmark

Find the odd one out?

- Flourish
- Renovate
- Thrive
- Blossom

**Question No.59**

4.00

Bookmark

The bauxite deposits of central and western India have been formed from

- Basalt.
- Syenite.
- Granite
- Nepheline syenite

**Question No.60**

4.00

Bookmark

Which of the option exhibits a distinctive texture called *Spinifex texture*?

- Spilites
- Tholeiites
- Picrites
- Komatiites

**Question No.61**

4.00

Bookmark

Ocean island Basalt magmas are characterized by\_\_\_\_\_

- Enrichment in LREE and LILE
- Enrichment of LREE and LILE compare to continental crust
- Depletion in LILE and LREE compare to MORB
- Large scale contamination of continental crust

**Question No.62**

4.00

Bookmark

On the toposheet; 4 cm= 2Km. What is scale of the map?

- 1:50
- 1:05
- 0.3888
- 1:50,000

**Question No.63**

4.00

Bookmark

**Statement:** Warning: Cigarette smoking is injurious to Health

**Assumptions:**

I. Non-Smoking Promotes Health

II. This warning is not necessary

- If only assumption II is implicit
- If only assumption I is implicit
- If both I and II are implicit
- If neither I nor II is implicit

**Question No.64**

4.00

Bookmark

A vertical dyke showing transverse veins is known as

- Vug
- Ladder vein
- Saddle reef
- Stock work

**Question No.65**

4.00

Bookmark

Which color is having largest wavelength in visible spectrum?

- Yellow
- Red
- Green
- Blue

**Question No.66**

4.00

Bookmark

Select the Pair that best represents the relationship that is given in the question:

Slapstick:Laughter

- Mimicry:Laughter
- Clown: Comical
- Satire: Sarcasm
- Horror:Fear

**Question No.67**

4.00

Bookmark

Gossans is a

- ferruginous residue
- siliceous residue.
- calcareous residue.
- organic residue.

**Question No.68**

4.00

Bookmark

Which of the following is released in large quantities from coal after it is burnt?

- Helium
- Hydrogen
- Nitrogen Dioxide
- Sulphur dioxide

**Question No.69**

4.00

Bookmark

Flood hazards along a stream may be greatly reduced by the use of

- Retention ponds

- Deforestation
- Channelization
- Flood plains

**Question No.70**

4.00

Bookmark

Igneous rocks owing their origin to the same parent magma are termed as

- Eutectic
- Paramagnetic
- Orthomagnetic
- Comagmatic

**Question No.71**

4.00

Bookmark

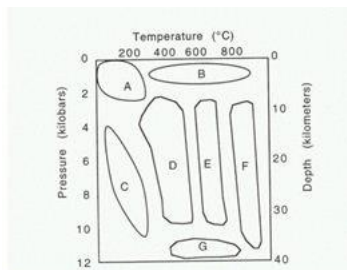
Quartz wedge is always cut

- Parallel to b-axis
- Perpendicular to c-axis
- Parallel to c-axis
- Perpendicular to b-Axis

**Question No.72**

4.00

Bookmark



The zeolite facies occur in \_\_\_\_\_ pressure-temperature regime

- Area "D"
- Area "C"
- Area "A"
- Area "B"

**Question No.73**

4.00

Bookmark

Which of the following is NOT a type of silicate structure?

- sheet silicate
- double chain silicate
- single-chain silicate
- Mobyus strip silicate

**Question No.74**

4.00

Bookmark

The downward movement of wet soil along the slopes under the influence of gravity is \_\_\_

- Solifluction
- Plastic outflows
- Rock slides
- Debris flow

**Question No.75**

4.00

Bookmark

In which of the following environments would you expect to find symmetrical ripples?

- Fluvial
- Glacial
- Beach
- Aeolian

**Question No.76**

4.00

Bookmark 

I don't care if she comes to my house or not.  
The underlined word is a

- gerund
- conjunction
- verb
- pronoun

**Question No.77**

4.00

Bookmark 

The characteristic rocks of the Island-Arc Systems are

- Andesite
- Blue Schist
- Granodiorite
- Basalts

**Question No.78**

4.00

Bookmark 

Asphaltenes are molecular substances that are found in \_\_\_\_\_

- paraffin
- Resins
- Gas
- Crude Oil

**Question No.79**

4.00

Bookmark 

A potassic ultrabasic hybrid igneous rock containing macrocrysts of olivine, Cr-rich diopside, phlogopite and pyrope in a groundmass of serpentine, carbonate and perovskite can be named as

- Kimberlite
- Harzburgite
- Melilitolite
- Ijolite

**Question No.80**

4.00

Bookmark 

Cross bedding is a \_\_\_\_\_ property

- Scalar
- Either scalar or vector
- Vector
- Linear

**Question No.81**

4.00

Bookmark 

Which of the following is NOT a primary contributor to the greenhouse effect?

- carbon monoxide
- chlorofluorocarbons
- carbon dioxide
- methane gas

**Question No.82**

4.00

Bookmark 

Where are melts likely to be produced by the adiabatic rise of mantle?

- East pacific Ridge
- Atlantic ridge
- mid-oceanic ridges and hot spots

M-discontinuity zone

**Question No.83**

4.00

Bookmark

Which planets have retrograde rotation?

- Jupiter and Neptune
- Venus and Uranus
- Mercury and Pluto
- Saturn and Mars

**Question No.84**

4.00

Bookmark

In India, Baryte deposits occurs in----- form

- vein type
- fissure type.
- stringer type
- bedded type

**Question No.85**

4.00

Bookmark

*Ptillophyllum* flora is the characteristic of?

- Hot and dry climate
- Desert climate
- Cold climate
- Marine climate

**Question No.86**

4.00

Bookmark

Cavities in lava formed by the evolution of volatiles are

- Amygdule
- Oolites
- Pumice
- Pisolites

**Question No.87**

4.00

Bookmark

In olivine structure the layers consisting of octahedral cross linked by independent  $\text{SiO}_4$  tetrahedra, lie parallel to

- 10
- 101
- 100
- 1

**Question No.88**

4.00

Bookmark

When Uranium-238 emits  $\alpha$  particles it decays in to

- Thorium-234
- Uranium-235
- Helium
- Carbon

**Question No.89**

4.00

Bookmark

Choose the best antonym of the italicized word.

There has always been a feeling of *rancour* between the two families.

- friendliness
- suspicion
- competition
- rivalry

**Question No.90**

4.00

Bookmark

The stress opposing a slope's shear stress is imparted by \_\_\_\_\_

- gravity
- running water
- earthquakes
- frost wedging

**Question No.91**

4.00

Bookmark

Study the following information carefully and answer the question below it:

P, Q, R, S T went on a picnic. P is son of Q but Q is not the father of P. R is the son of S, who is the brother of P. T is the wife of S.

How is P related to S?

- Brother
- Father
- Nephew
- None of these

**Question No.92**

4.00

Bookmark

We're late again for the test, \_\_\_\_\_?

- isn't it?
- are we?
- aren't we?
- is it?

**Question No.93**

4.00

Bookmark

Chromium is a straggly lithophile element in the earth's crust, but it is found as Chalcophile in some meteorites because of \_\_

- Oxygen rich
- Hydrogen deficiency
- Oxygen deficiency
- Carbon deficiency

**Question No.94**

4.00

Bookmark

Which of the following rocks is deposited only by non-biological, chemical precipitation?

- coal
- chert
- halite
- limestone

**Question No.95**

4.00

Bookmark

People in the age group of 40 to 50 years are more likely to purchase ice cream and are more likely to purchase it in large amounts than are members of any other age group. The general perception that teenagers eat more ice cream than adults must, therefore, be incorrect.

The argument is flawed primarily because the author

- does not specify the precise amount of ice cream purchased by any demographic group
- fails to distinguish between purchasing and consuming
- discusses ice cream rather than more nutritious and healthful foods
- depends on popular belief rather than on documented research findings

**Question No.96**

4.00

Bookmark

Horizontal access to ore body in the underground mines are-----

- Adit
- Stope
- Shaft
- Winze

**Question No.97**

4.00

\_\_\_\_\_ type of logs used to measure the specific resistance of the geologic formation.

- Caliper
- Neutron
- Resistivity
- Gamma ray

**Question No.98**

4.00

Bookmark 

Study the following information carefully and answer the question below it

The Director of an MBA college has decided that six guest lectures on the topics of Motivation, Decision Making, Quality Circle, Assessment Centre, Leadership and Group Discussion are to be organised on each day from Monday to Sunday.

- (i) One day there will be no lecture (Saturday is not that day), just before that day Group Discussion will be organised.
- (ii) Motivation should be organised immediately after Assessment Centre.
- (iii) Quality Circle should be organised on Wednesday and should not be followed by Group Discussion
- (iv) Decision Making should be organised on Friday and there should be a gap of two days between Leadership and Group Discussion

On which day the lecture on Leadership will be organised?

- Saturday
- Tuesday
- Monday
- Thursday

**Question No.99**

4.00

Bookmark 

The evaporation through plants and from the surrounding soil together is known as

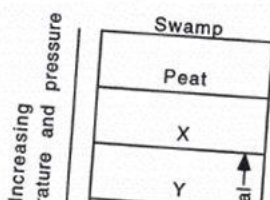
- Both a and b
- Evapo-transpiration
- Evaporation
- Transpiration

**Question No.100**

4.00

Bookmark 

Name the types of coals in X-Y-Z layers in an order







- Lignite-Bituminous-Anthracite
- Bituminous-Lignite-Anthracite
- Anthracite-Lignite-Bituminous
- Lignite-Anthracite-Bituminous