

Section 1 - Section 1

Question No.1

4.00

Bookmark

The tendency for variations in current velocity to segregate sediments based on particle size is called

- lithification
- sorting
- compaction
- metamorphism

Question No.2

4.00

Bookmark

The geochemical character of an element is governed by the----

- electronic configuration of its atoms.
- number of neutrons in the nucleus
- number of isotopes in nucleus
- number of proton in the nucleus

Question No.3

4.00

Bookmark

When the bus was at full speed, its brakes failed and an accident was _____

- essential
- infallible
- inevitable
- undeniable

Question No.4

4.00

Bookmark

Greywacke typically exhibits

- Flaser bedding
- Graded bedding
- Torrential bedding
- Herringbone cross-bedding

Question No.5

4.00

Bookmark

Correct the error in the italicized part of the sentence by choosing the most appropriate option.

Leaving aside little room for misinterpretation, the senior politician offered clarifications about his role in the party elections.

- Leaving less room for
- Having left less room for
- Leaving for little room to
- Leaving little room for

Question No.6

4.00

Bookmark

Ptillophyllum flora is the characteristic of?

- Hot and dry climate
- Marine climate
- Desert climate
- Cold climate

Question No.7

4.00

Bookmark

Choose the best antonym of the italicized word.

There has always been a feeling of *rancour* between the two families.

- suspicion
- competition
- friendliness
- rivalry

Question No.8

4.00

Bookmark

Which was the warmest epoch of the Cenozoic?

- Oligocene
- Eocene
- Paleocene
- Miocene

Question No.9

4.00

Bookmark

Asphaltene are molecular substances that are found in _____

- paraffin
- Crude Oil
- Gas
- Resins

Question No.10

4.00

Bookmark

The bauxite deposits of central and western India have been formed from

- Nepheline syenite
- Granite
- Basalt.
- Syenite.

Question No.11

4.00

Bookmark

A limestone composed entirely of organic detritus is referred as

- Coquina
- Oolite
- Encrinite
- Spergenite

Question No.12

4.00

Bookmark

Choose the synonym of the italicized word. Many cities were *incinerated* during the war.

- bombed
- destroyed
- burnt
- attacked

Question No.13

4.00

Bookmark

Which of the wavelength is useful for imaging from a satellite in cloud-covered condition?

- 4 cm
- 4nm
- 4mm
- 0.4nm

Question No.14

4.00

Bookmark

Extremely large scale lithostratigraphic units bounded by transgressive-regressive unconformities are called

- facies
- cratonic sequences
- mobile belts
- Super groups

Question No.15

4.00

Bookmark

The evaporation through plants and from the surrounding soil together is known as

- Evapo-transpiration
- Evaporation
- Both a and b

- Transpiration

Question No.16

4.00

Bookmark

Incohesive rock containing angular rock fragments set in a fine grained matrix is referred as

- Breccia
- Cataclastics
- Gouges
- Mylonites

Question No.17

4.00

Bookmark

The altitude of LANDSAT satellite is

- 1200Km
- 800Km
- 900Km
- 600Km

Question No.18

4.00

Bookmark

The deposition of amorphous silica layer by layer produces

- Cockade structure
- Geodes
- Comb structure
- Liesegang banding

Question No.19

4.00

Bookmark

Flood hazards along a stream may be greatly reduced by the use of

- Deforestation
- Channelization
- Retention ponds
- Flood plains

Question No.20

4.00

Bookmark

In contact metamorphism the source of increased temperature and pressure is _____

- impact metamorphism
- the increase in temperature with increasing depth of burial
- due to increased rate of radioactive decay
- a local intrusive heat source

Question No.21

4.00

Bookmark

Which of the option exhibits a distinctive texture called *Spinifex texture*?

- Spillites
- Picrites
- Komatiites
- Tholeiites

Question No.22

4.00

Bookmark

A vertical dyke showing transverse veins is known as

- Saddle reef
- Ladder vein
- Stock work
- Vug

Question No.23

4.00

Bookmark

Which of the following metamorphic rocks forms in the forearc of a subduction zone?

- Gneiss
- Quartzite
- Amphibolite
- Blueschist

Question No.24

4.00

Bookmark

The magnitude of gravity on the earth's surface depends on

- latitude, elevation, topography, earth tides and density variations in the subsurface
- latitude, elevation and topography
- latitude, elevation, topography and earth tides.
- density variations in the subsurface

Question No.25

4.00

Bookmark

Which of the following is released in large quantities from coal after it is burnt?

- Sulphur dioxide
- Hydrogen
- Nitrogen Dioxide
- Helium

Question No.26

4.00

Bookmark

Why do Mercury and the Moon lack an atmosphere?

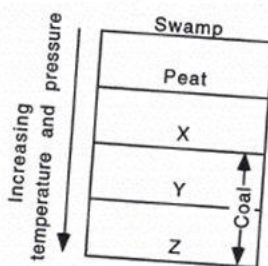
- They are small that their gravity is too weak to retain an atmosphere.
- They formed after all the gas had been used up.
- They are cold that all their gases have frozen into deposits below their surface.
- They formed before the solar nebula had captured any gas.

Question No.27

4.00

Bookmark

Name the types of coals in X-Y-Z layers in an order



- Lignite-Anthracite-Bituminous
- Lignite-Bituminous-Anthracite
- Anthracite-Lignite-Bituminous
- Bituminous-Lignite-Anthracite

Question No.28

4.00

Bookmark

In the following question, the first two words (given in italics) have a definite relationship. Choose one word out of the given four alternatives which will fill the blank space and show the same relationship with the third word as between the first two.

Hear is to *Deaf* as *Speak* is to?.....

- Silent
- Talkative
- Listen
- Dumb

Question No.29

4.00

Bookmark

Which type of pressure will result in the alignment of metamorphic minerals?

- directed pressure
- confining pressure
- contact pressure
- chemical pressure

Question No.30

4.00

Bookmark

Which of the following sedimentary environments is characterized by sand, gravel and mud?

- active margin beach
- alluvial fans
- glacial
- deep marine

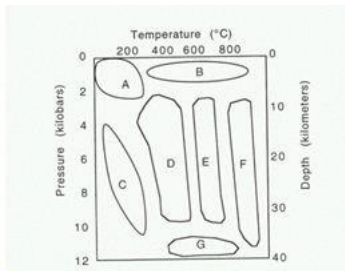
Question No.31

4.00

Bookmark

Diamond in Kimberlite and Corundum in Nepheline syenite are examples of__

- Segregated deposit
- Pegmatitic deposit
- Injected deposit.
- Disseminated deposit



The zeolite facies occur in _____ pressure-temperature regime

- Area "D"
- Area "C"
- Area "A"
- Area "B"

Which is the fundamental step in image processing?

- image enhancement
- filtration
- image acquisition
- image restoration

Gravity fault are formed under _____ regime

- Tensile stress
- Effect of torsion forces
- Compressive force
- Shear

Diamond bearing conglomerates of central India underlie _____

- Bhandar series
- Saline series
- Kaladgi series
- Sakoli series

Which of the following is NOT a type of silicate structure?

- Mobyus strip silicate
- double chain silicate
- single-chain silicate
- sheet silicate

Gossans is a

- ferruginous residue

- ferruginous residue.
- calcareous residue.
- siliceous residue.
- organic residue.

Question No.38

4.00

Bookmark

Quartz wedge is always cut

- Perpendicular to c-axis
- Parallel to c-axis
- Parallel to b-axis
- Perpendicular to b-Axis

Question No.39

4.00

Bookmark

Melange deposits are associated with

- Convergent boundaries
- subduction margins
- transform boundaries
- divergent boundaries

Question No.40

4.00

Bookmark

A man makes 150 pots per minute. If 30 pots are packed in a case how many cases will be made ready by the Man in one hour?

- 200
- 250
- 1000
- 300

Question No.41

4.00

Bookmark

_____ is a useful statistic to calculating goodness of fit

- Fourier analysis
- Chi-square test
- f-test
- Normal distribution

Question No.42

4.00

Bookmark

We must always try to adapt ourselves _____ our circumstances.

- in
- by
- with
- to

Question No.43

4.00

Bookmark

In which of the following environments would you expect to find symmetrical ripples?

- Fluvial
- Aeolian
- Glacial
- Beach

Question No.44

4.00

Bookmark

Folds with a pair of converging axial surfaces and having a square hinge zone are known as

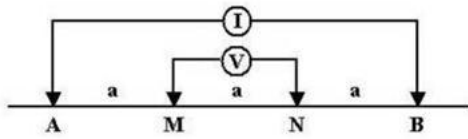
- Overtun folds
- Similar folds
- Parallel
- Box folds

Question No.45

4.00

Bookmark

Identify the type of geophysical method



- magnetic
- Gravity
- Wenner
- Schlumberger

Question No.46

4.00

Bookmark

The downward movement of wet soil along the slopes under the influence of gravity is ___

- Solifluction
- Debris flow
- Plastic outflows
- Rock slides

Question No.47

4.00

Bookmark

Which planets have retrograde rotation?

- Saturn and Mars
- Mercury and Pluto
- Jupiter and Neptune
- Venus and Uranus

Question No.48

4.00

Bookmark

A dendritic drainage pattern will tend to develop in regions

- along the flanks of isolated volcanoes
- Of folded rocks
- of flat-lying sedimentary rocks
- Underlain by regularly spaced joints

Question No.49

4.00

Bookmark

Limestone and chalk beds are often derived from the shells of

- foraminifera.
- diatoms
- radiolarians
- dinoflagellates

Question No.50

4.00

Bookmark

Chromium is a straggly lithophile element in the earth's crust, but it is found as Chalcophile in some meteorites because of __

- Oxygen rich
- Oxygen deficiency
- Carbon deficiency
- Hydrogen deficiency

Question No.51

4.00

Bookmark

Which color is having largest wavelength in visible spectrum?

- Yellow
- Blue
- Red
- Green

Question No.52

4.00

Bookmark

Which of the following isotopes is NOT a radioisotope?

- Carbon-14
- Sulphur-35
- Carbon-13
- Tritium

Question No.53

4.00

Bookmark

Compressibility can be described as reciprocal of

- Young Modulus
- Bulk modulus
- Rigidity modules
- Poisson Ratio

Question No.54

4.00

Bookmark

Which of the following is NOT a primary contributor to the greenhouse effect?

- chlorofluorocarbons
- carbon dioxide
- carbon monoxide
- methane gas

Question No.55

4.00

Bookmark

The thickest coal seam in India is;

- Jaharia
- Bokaro
- Singrauli
- Raniganj

Question No.56

4.00

Bookmark

I don't care if she comes to my house or not.

The underlined word is a

- verb
- pronoun
- gerund
- conjunction

Question No.57

4.00

Bookmark

The specific gravity of a powdered mineral can be determined with the help of

- Pycnometer
- Walker's Steel Yard

- Walker's Steel ratio
- Jolly's spring balance
- Chemical balance

Question No.58

4.00

Bookmark

Ocean island Basalt magmas are characterized by_____

- Enrichment of LREE and LILE compare to continental crust
- Depletion in LILE and LREE compare to MORB
- Enrichment in LREE and LILE
- Large scale contamination of continental crust

Question No.59

4.00

Bookmark

We're late again for the test, _____?

- aren't we?
- are we?
- is it?
- isn't it?

Question No.60

4.00

Bookmark

Cavities in lava formed by the evolution of volatiles are

- Pumice
- Amygdule
- Pisolites
- Oolites

Question No.61

4.00

Bookmark

Igneous rocks owing their origin to the same parent magma are termed as

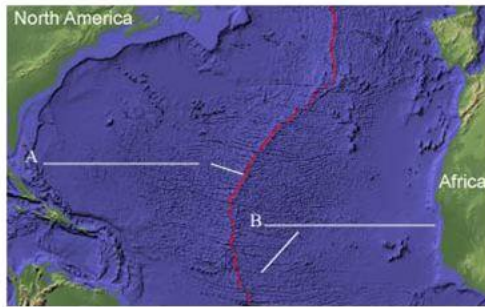
- Comagmatic
- Eutectic
- Paramagnetic
- Orthomagnetic

Question No.62

4.00

On the following illustration identify the features A and B

On the following illustration identify the features A and B



- Mid Oceanic Ridge
- Carls Ridge
- Mid-Atlantic Ridge
- East Pacific Ridge

Question No.63

4.00

Bookmark

Diagenesis of organic matter forms -----

- Oil
- Gas
- Kerogen
- Dry Gas

Question No.64

4.00

Bookmark

Find the odd one out?

- Birds : Horticulture
- Silkworm: Sericulture
- Fish : Pisciculture
- Bees : Apiculture

Question No.65

4.00

Bookmark

What may be the maximum angle of wind ward slope and Leeward slope in a sand dune?

- 10° and 40°
- 5° and 30°
- 20° and 60°
- 15° and 50°

Question No.66

4.00

Bookmark

Batholiths are always associated with

- Island arcs
- Orogenic belt
- Earth zones
- Folds and faults

Question No.67

4.00

Bookmark

In India, Baryte deposits occurs in----- form

- vein type

- stringer type
- bedded type
- fissure type.

Question No.68

4.00

Bookmark

Select the Pair that best represents the relationship that is given in the question:

Slapstick:Laughter

- Horror:Fear
- Clown: Comical
- Mimicry:Laughter
- Satire: Sarcasm

Question No.69

4.00

Bookmark

_____ is an example of a shoreline/transitional depositional environment

- Littoral
- Shelf
- Lagoon
- Delta

Question No.70

4.00

Bookmark

A potassic ultrabasic hybrid igneous rock containing macrocrysts of olivine, Cr-rich diopside, phlogopite and pyrope in a groundmass of serpentine, carbonate and perovskite can be named as

- Jolite
- Kimberlite
- Harzburgite
- Melilitolite

Question No.71

4.00

Bookmark

When Uranium-238 emits α particles it decays in to

- Carbon
- Thorium-234
- Uranium-235
- Helium

Question No.72

4.00

Bookmark

Exhausted: Tired

- Depressed : Sad
- Arrogant: Docile
- Considerate: Rude
- Progressive: Regressive

Question No.73

4.00

Bookmark

_____ type of logs used to measure the specific resistance of the geologic formation.

- Caliper
- Resistivity
- Gamma ray
- Neutron

Question No.74

4.00

Bookmark

The stress opposing a slope's shear stress is imparted by_____

- frost wedging
- earthquakes
- gravity
- running water

Question No.75

4.00

Bookmark

Which type of geophysical prospecting method is used for direct exploration of chromite?

- Seismic
- Gravity
- Magnetic
- Resistivity

Question No.76

4.00

Bookmark

In petroleum exploration, the Biosurfactant is -----

- variety of metabolic products
- Variety of Kerogen
- Type of mud
- Types of sulfur

Question No.77

4.00

Bookmark

Statement: The Company has recently announced a series of incentives to the employees who are punctual and sincere.

Assumptions:

- I.Those who are punctual will get motivated.
 - II. The Productivity of the company may increase.
- If only assumption I is implicit
 - If neither I nor II is implicit
 - If both I and II are implicit
 - If only assumption II is implicit

Question No.78

4.00

Bookmark

In olivine structure the layers consisting of octahedral cross linked by independent SiO_4 tetrahedra, lie parallel to

- _____
- 101
 - 1
 - 100
 - 10

Question No.79

4.00

Bookmark

Horizontal access to ore body in the underground mines are-----

- Adit
- Stope
- Shaft
- Winze

Question No.80

4.00

Bookmark

On the toposheet; 4 cm= 2Km. What is scale of the map?

- 1:05
- 0.3888
- 1:50,000
- 1:50

Question No.81

4.00

Bookmark 

Name the microfossil in the above figure

- Pollen grain
- Foraminifera
- Radiolarian
- Conodonts

Question No.82

4.00

Bookmark

Study the following information carefully and answer the question below it

The Director of an MBA college has decided that six guest lectures on the topics of Motivation, Decision Making, Quality Circle, Assessment Centre, Leadership and Group Discussion are to be organised on each day from Monday to Sunday.

- (i) One day there will be no lecture (Saturday is not that day), just before that day Group Discussion will be organised.
- (ii) Motivation should be organised immediately after Assessment Centre.
- (iii) Quality Circle should be organised on Wednesday and should not be followed by Group Discussion
- (iv) Decision Making should be organised on Friday and there should be a gap of two days between Leadership and Group Discussion

On which day the lecture on Leadership will be organised?

- Thursday
- Monday
- Tuesday
- Saturday

Question No.83

4.00

Bookmark

Which metals may be obtained from the stagnate ore mineral?

- Copper and Tungsten.
- Copper and Tin.
- Zinc and silver.

- Copper and zinc.

Question No.84

4.00

Bookmark

Which of the following rocks is deposited only by non-biological, chemical precipitation?

- coal
- halite
- limestone
- chert

Question No.85

4.00

Bookmark

Cross bedding is a _____ property

- Linear
- Vector
- Scalar
- Either scalar or vector

Question No.86

4.00

Bookmark

During the Cambrian, most of the continents were-----

- covered by ice
- dispersed in low latitude regions
- together in one landmass
- dispersed around polar regions

Question No.87

4.00

Bookmark

The characteristic rocks of the Island-Arc Systems are

- Andesite
- Basalts
- Blue Schist
- Granodiorite

Question No.88

4.00

Bookmark

The Isometric system is characterized by

- 6 axes of 5 fold symmetry
- 4 axes of 3 fold symmetry
- 2 axes of 4 fold symmetry
- 3 axes of 4 fold symmetry

Question No.89

4.00

Bookmark

The path finder element for exploration for gold deposits is _____

- Silver
- Arsenic
- Nickel
- Antimony

Question No.90

4.00

Bookmark

Statement: Warning: Cigarette smoking is injurious to Health

Assumptions:

I. Non-Smoking Promotes Health

II. This warning is not necessary

- If only assumption II is implicit
- If neither I nor II is implicit
- If both I and II are implicit
- If only assumption I is implicit

Question No.91

4.00

Bookmark

In which type of formation, the capillary rise will be high?

- Gravel
- Medium sand.
- Loam.
- Clay

Question No.92

4.00

Bookmark

This pup is very naughty. It is always _____ some mischief or the other.

- in for
- up at
- out for
- up to

Question No.93

4.00

Bookmark

The term pH stands to

- Per Hydrogen ion
- Puissance de Hydrogen
- Pure Hydrogen
- Potential Hydrogen

Question No.94

4.00

Bookmark

Where are melts likely to be produced by the adiabatic rise of mantle?

- M-discontinuity zone
- mid-oceanic ridges and hot spots
- East pacific Ridge
- Atlantic ridge

Question No.95

4.00

Bookmark

People in the age group of 40 to 50 years are more likely to purchase ice cream and are more likely to purchase it in large amounts than are members of any other age group. The general perception that teenagers eat more ice cream than adults must, therefore, be incorrect.

The argument is flawed primarily because the author

- does not specify the precise amount of ice cream purchased by any demographic group
- depends on popular belief rather than on documented research findings
- fails to distinguish between purchasing and consuming
- discusses ice cream rather than more nutritious and healthful foods

Question No.96

4.00

Bookmark

If Road is coded as WTFI, what is the code for BEAT

- DEFG
- GJFY
- HIGZ
- ABCD

Question No.97

4.00

Bookmark

_____ is a satellite sensor.

- HYPERION
- LISS IV
- AVIRIS
- LISS III

Question No.98

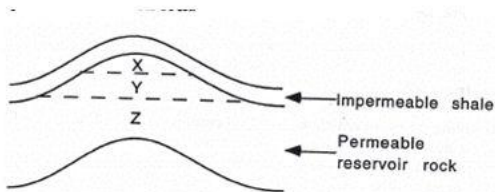
4.00

Bookmark

Reservoir rock containing

in the pore space of XYZ layers find the correct content in

the pore spaces of XYZ layers



- X-Gas/Y-Oil/Z-Water
- X-water/Y-Gas/Z-Oil
- X-Oil/Y-water/Z-Gas
- X-Water/Y-gas/Z-Oil

Question No.99

4.00

Bookmark

Study the following information carefully and answer the question below it:

P, Q, R, S T went on a picnic. P is son of Q but Q is not the father of P. R is the son of S, who is the brother of P. T is the wife of S.

How is P related to S?

- Brother
- Father
- Nephew
- None of these

Question No.100

4.00

Bookmark

Find the odd one out?

- Blossom
- Flourish
- Renovate
- Thrive