

## PU Ph D Food Science and Nutrition

### 1 of 100

161 PU\_2015\_152

Among the following, which is best maturity index for Grape?

- Colour
- TSS
- Shape
- Size

### 2 of 100

114 PU\_2015\_152

The first crop plant genome sequenced:-

- Cotton
- Rice
- Tobacco
- Maize

### 3 of 100

165 PU\_2015\_152

Which is the richest dietary source of n-3 long chain polyunsaturated fatty acids?

- salmon
- soyabean
- flax seed
- beef

### 4 of 100

185 PU\_2015\_152

Foods that have a pH>5.3 are considered to be \_\_\_\_\_.

- high-acid foods
- acid foods
- low-acid foods
- medium-acid foods

### 5 of 100

180 PU\_2015\_152

\_\_\_\_\_ is the ingredient that imparts a unique color and flavor to cured neat products.

- Sodium chloride
- Sodium citrate
- Sodium nitrite

- Sodium nitrate

**6 of 100**

119 PU\_2015\_152

Which of the following enzyme(s) is/are required for lactose fermentation?

- Transacetylase
- $\beta$ -galactosidase
- Galactosidepermease
- All of these

**7 of 100**

145 PU\_2015\_152

Which of the following statements about ATP-binding cassette (ABC) proteins is incorrect?

- ATP-binding cassette (ABC) proteins have ATP-binding transmembrane domains
- ATP-binding cassette (ABC) proteins have ATP-binding cytoplasmic domains
- The multidrug resistance protein (MDR protein) is an ATP-binding cassette (ABC) protein
- A number of genetic diseases are associated with deficiencies in ATP-binding cassette (ABC) proteins

**8 of 100**

200 PU\_2015\_152

Which of the following best describes the polysaccharide amylose?

- $\alpha$  1,4-O- $\alpha$ -linked poly-D-mannose
- $\alpha$  1,4-O- $\beta$ -linked poly-D-glucose
- $\alpha$  1,4-O- $\alpha$ -linked poly-D-glucose
- an alternating 1,4-O- $\alpha/\beta$ -linked poly-D-glucose

**9 of 100**

141 PU\_2015\_152

Why cannot fatty acids be converted into glucose in starvation?

- Acetyl CoA cannot be converted into pyruvate
- Fatty acids are esterified to triacylglycerols
- Fatty acids are transported on albumin which interferes with their metabolism
- Fatty acids are oxidised in mitochondria and glucose is synthesised in the cytosol

**10 of 100**

144 PU\_2015\_152

Where do precursor T-lymphocytes develop into fully competent but not yet activated T- cells?

- The spleen
- The thymus gland

- The lymph nodes
- The bone marrow

### 11 of 100

101 PU\_2015\_152

The effectiveness of many chemical preservative depends primarily on the food:-

- Water content
- pH
- Temperature
- Acidity

### 12 of 100

133 PU\_2015\_152

Liver is the largest gland associated with several functions. Which one of the following is stated incorrect?

- Makes all the cholesterol that human body needs
- Secrete hormone called gastrin
- Stores glucose as glycogen
- Manufactures bile, converts the amino group to urea

### 13 of 100

111 PU\_2015\_152

Syntrophism is a type of:-

- Mutualism
- Parasitism
- Synergism
- Commensalism

### 14 of 100

168 PU\_2015\_152

Which of the following is not a function of folate:-

- Purine synthesis
- Conversion of tryptophan into niacin
- Conversion of serine into glycine
- Pyrimidine synthesis

### 15 of 100

201 PU\_2015\_152

Which of the following statements is false with respect to an enzyme's ability to catalyse a reaction?

- An enzyme binds reactants such that they are positioned correctly and can attain their transition-state configurations

- An enzyme allows the reaction to go through a less stable transition state than would normally be the case
- An enzyme provides a reaction surface and a suitable environment for the reaction to take place
- An enzyme can weaken bonds in reactants through the binding process

#### 16 of 100

118 PU\_2015\_152

Fats of fish are readily digestible because they are:-

- Rich in unsaturated fats
- Rich in saturated fats
- Digestibility has no relation with saturation of fat
- Lipoxidase enzymes

#### 17 of 100

103 PU\_2015\_152

The chief spoilage organisms on smoked fish are:-

- (a) Molds
- (b) Bacteria
- (c) Both (a) and (b)
- (d) Fungi

#### 18 of 100

199 PU\_2015\_152

Of the estimated 10,000 products introduced each year approximately\_\_\_\_\_ percent will survive in the marketplace.

- 1
- 50
- 75
- 26

#### 19 of 100

186 PU\_2015\_152

By using \_\_\_\_\_ the microbial species introduced for fermentation can be controlled.

- a mother culture
- natural contamination
- a starter culture
- back slopping

#### 20 of 100

143 PU\_2015\_152

Which of the following cell types or systems is not part of an innate immune response to a pathogen?

- The inflammatory response
- Natural killer cells
- Cytotoxic T-lymphocytes
- Phagocytes

### 21 of 100

147 PU\_2015\_152

Which of the following statements about SDS polyacrylamide gel electrophoresis is correct?

- Proteins are solubilized but not denatured when separated by SDS polyacrylamide gel electrophoresis
- SDS polyacrylamide gel electrophoresis separates proteins on the basis of charge
- SDS polyacrylamide gel electrophoresis separates proteins on the basis of size
- Wanted proteins can be tested for their biological activity after separation by SDS polyacrylamide gel electrophoresis

### 22 of 100

203 PU\_2015\_152

Regarding gastro-intestinal function:-

- Distension of the ileum stimulates gastric motility
- Total gastrectomy leads to malabsorption of vitamin B<sub>12</sub>
- The presence of large amounts of fat in the chyme will accelerate gastric emptying
- Aldosterone inhibits the absorption of sodium and water by the large intestine

### 23 of 100

130 PU\_2015\_152

Lecithins are composed of:-

- Glycerol + Fatty acids + Phosphoric acid + Choline
- Glycerol + Fatty acids + Phosphoric acid + Betaine
- Glycerol + Fatty acids + Phosphoric acid + Serine
- Glycerol + Fatty acids + Phosphoric acid + Ethanolamine

### 24 of 100

206 PU\_2015\_152

Identify the strongest form of intermolecular bonding that could be formed involving the residue of the amino acid serine.

- ionic bond
- hydrogen bond
- van der Waals interactions
- none of the above

**25 of 100**

117 PU\_2015\_152

The red or pink color of the fish is generally caused from the growth of:-

- Sarcina*
- Micrococcus or Bacillus species*
- Molds or yeasts*
- All of these

**26 of 100**

179 PU\_2015\_152

A food that can be stored at room temperature for a prolonged or indefinite time period with minimal quality deterioration is said to be \_\_\_\_\_.

- room stable
- shelf superior
- shelf stable
- room superior

**27 of 100**

164 PU\_2015\_152

Process lethality at a specified temperature is a multiple of:-

- Z-value
- Final concentration of microbes
- Decimal reduction time
- Initial concentration of microbes

**28 of 100**

184 PU\_2015\_152

HACCP is an acronym that stands for \_\_\_\_\_.

- Have A Cup of Coffee and Pray
- Hazard Analysis and Critical Control Point
- Hazard Analysis and Critical Command Program
- Hazard Analysis and Critical Control Program

**29 of 100**

182 PU\_2015\_152

Milk undergoes a process called \_\_\_\_\_ that is intended to break down fat globules so they are smaller and more uniform in size.

- emulsification
- encapsulation
- homogenization

- pasteurization

### 30 of 100

140 PU\_2015\_152

Which of the following reactions constitutes an 'oxidative decarboxylation'?

- The conversion of pyruvate into lactate
- The conversion of pyruvate into acetyl CoA
- The conversion of lactate into pyruvate
- The conversion of pyruvate into oxaloacetate

### 31 of 100

208 PU\_2015\_152

The water content (as a percentage of total body mass) of an adult human male is:-

- Slightly less than that of an adult female
- Around 60% total body weight
- The same as that of a newborn baby
- Is mainly due to the volume of the blood

### 32 of 100

102 PU\_2015\_152

*E. coli* O157:H7 is thought to have acquired enterohemorrhagic genes from:-

- Bacillus*
- Shigella*
- Campylobacter*
- Clostridium*

### 33 of 100

113 PU\_2015\_152

The first transgenic plant to be produced:-

- Cotton
- Maize
- Tobacco
- Rice

### 34 of 100

116 PU\_2015\_152

Curacin A is a potent anti-tumour agent obtained from a marine:-

- Aspergillus
- Cyanobacterium
- Actinomyces

Corol reef

**35 of 100**

163 PU\_2015\_152

Mostly dry fruit are rich in:-

Carbohydrates

Fats

Vitamins

Protein

**36 of 100**

149 PU\_2015\_152

\_\_\_\_\_ is a fructosan.

Cellulose

Inulin

Glycogen

Agar

**37 of 100**

110 PU\_2015\_152

Bovine group A rotavirus contain:-

ds DNA

ss DNA

ss RNA

ds RNA

**38 of 100**

146 PU\_2015\_152

Which is an important function of cholesterol in cell membranes

It allows polar substances to pass through the membrane

It stabilises the structure of mammalian membranes

It increases the fluidity of the membrane at 37°C

It acts as a fluidity barrier in bacterial membranes

**39 of 100**

132 PU\_2015\_152

Which factor is responsible for inhibition enzymatic process during feedback?

Substrate

Enzymes

Temperature



- End product

**40 of 100**

188 PU\_2015\_152

To determine the amount of free water available for microorganisms to grow in a food product, \_\_\_\_\_ is measured.

- water concentration
- water activity
- moisture content
- relative humidity

**41 of 100**

207 PU\_2015\_152

Which of the following statements is incorrect regarding transport proteins?

- They serve to carry polar molecules across the hydrophobic cell membrane
- They are required to transport hydrophobic steroids across cell membranes
- They are present in cell membranes
- They are required to transport amino acids across cell membranes

**42 of 100**

181 PU\_2015\_152

Chemically leavened dough uses \_\_\_\_\_ as a leavening agent.

- steam
- baking powder
- yeast
- air

**43 of 100**

202 PU\_2015\_152

In a normal healthy individual with a total lung capacity of 6 litres:-

- The functional residual capacity would be about 2 litres
- The  $FE_{V_1}$  would be equivalent to about 1.5 litres
- The tidal volume at rest is about 1 litre
- The expiratory reserve volume at rest would be about 2 litres

**44 of 100**

166 PU\_2015\_152

Vitamin B<sub>1</sub> is stable in acid, unstable in aqueous solutions of PH more than:-

- 4.5
- 5.0

- 4.0
- 3.5

**45 of 100**

187 PU\_2015\_152

Which of the following foods cannot be effectively frozen?

- lettuce
- carrots
- broccoli
- cabbage

**46 of 100**

209 PU\_2015\_152

A subject with a body weight of 65 kg was injected with 10 ml of a 1% (w/v) solution of Evans Blue. After 10 min, the blood was sampled and found to contain 0.037 mg/ml of the dye. What is the plasma volume?

- 5 litres
- 0.27 litres
- 2.70 litres
- 27 litres

**47 of 100**

167 PU\_2015\_152

Pantothenic acid has a molecule of pantoic acid that is linked with:-

- b-cysteine
- phosphate
- b-alanin
- b-methionine

**48 of 100**

100 PU\_2015\_152

Which of the following terms describes organism that derives in cold?

- Psychrophiles
- Thermophiles
- Mesophilies
- Aerophiles

**49 of 100**

189 PU\_2015\_152

Which of the following is NOT a type of food processing?

- Cold processing

- Irradiation
- Rehydration
- Fermentation

**50 of 100**

112 PU\_2015\_152

The best source of salt tolerant gene:-

- Sea anemones
- Mangroves
- Mussels
- Fishes

**51 of 100**

183 PU\_2015\_152

\_\_\_\_\_ is responsible for the bright cherry red color of ground beef.

- Metmyoglobin
- Oxymyoglobin
- Myoglobin
- Dinitrosohemochromogen

**52 of 100**

148 PU\_2015\_152

\_\_\_\_\_ is a structural homopolysaccharide.

- Hyaluronic acid
- Inulin
- Starch
- Chitin

**53 of 100**

204 PU\_2015\_152

Histidine is degraded to to  $\alpha$ -ketoglutarate and is described as a:-

- Gluco amino acid
- Glucogenic amino acid
- Keto-gluco acid
- Ketogenic amino acid

**54 of 100**

160 PU\_2015\_152

Bitterness in peach is due to:-

- Sugar

- Hydrocyanin
- Prunasin acid
- Malic acid

**55 of 100**

115 PU\_2015\_152

Primary step in protein purification includes:-

- Homogenization
- Differential centrifugation
- Solubilisation
- All of these

**56 of 100**

169 PU\_2015\_152

\_\_\_\_\_ percent of the iodine in the body is present in the thyroid gland where it is used in the synthesis of several thyroid hormones.

- 50
- 80
- 60
- 70

**57 of 100**

142 PU\_2015\_152

Which of the following statements about nicotinamide adenine dinucleotide (NAD<sup>+</sup>) is correct?

- NAD<sup>+</sup> is a prosthetic group for several dehydrogenases
- NAD<sup>+</sup> is the initial electron donor in many metabolic oxidation reactions
- NAD<sup>+</sup> is the initial electron acceptor in many metabolic oxidation reactions
- NADH is the initial electron acceptor in many metabolic oxidation reactions

**58 of 100**

162 PU\_2015\_152

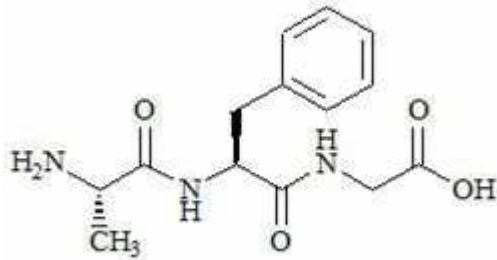
Maximum density of water is at a temperature of:-

- 7°C
- 7°C
- 0°C
- 4°C

**59 of 100**

205 PU\_2015\_152

Identify the correct name for the following peptide:-



- L-alanyl-glycyl-L-phenylalanine
- L-alanyl-L-phenylalanyl-glycine
- glycyl-L-phenylalanyl-L-alanine
- L-phenylalanyl-L-alanyl-glycine

60 of 100

131 PU\_2015\_152

Desmosine is an unusual amino acids found in:-

- Actin
- Elastin
- Myosin
- Troponin

61 of 100

232 PU\_2015\_152

What mechanism is responsible for movements of eukaryotic cilia and flagella:-

- Dynein moving on microtubules
- Kinesin moving on microfilaments
- Myosin moving on microfilaments
- Dynein moving on microfilaments

62 of 100

244 PU\_2015\_152

Sodium or potassium meta bi sulphate is added to crushed grapes to:-

- enhance the flavouring compound
- check the undesirable organisms
- maintain pH
- all of the above

63 of 100

245 PU\_2015\_152

Which of the following is not the immunomagnetic particle?

- Polyacrolein/ iron sulphate particles
- Polystyrene paramagnetic microparticle
- Polyesterene/divenyl- benzene
- Dynabeads

**64 of 100**

231 PU\_2015\_152

Fluorescent microscope is based on the ability of certain molecules to:-

- Observe light of a constant wavelength
- Observe light of a given wavelength & then emit light of short wavelength
- Observe light of a given wavelength & then emit light of longer wavelength
- Observe light of many different wavelength

**65 of 100**

230 PU\_2015\_152

Cyanobacteria differ from purple and green photosynthetic bacteria because:-

- They use  $H_2S$  as an electron donor
- They produce oxygen during photosynthesis
- They have a membrane enclosed nucleus
- They do not require light

**66 of 100**

233 PU\_2015\_152

Three dimensional images of the surface of the cells could be visualized through:-

- Scanning Electron Microscope
- Compound Microscope
- Transmission Electron Microscope
- Fluorescent Microscope

**67 of 100**

243 PU\_2015\_152

Which substrate is used in the fermentation of citric acid?

- Beet molasses
- Sucrose
- Starch hydrolysate
- All of these

**68 of 100**

241 PU\_2015\_152

Maximum size of foreign DNA that can be inserted into an insertion vector is:-

- 18 kb
- 50 kb
- 35 kb
- 27 kb

**69 of 100**

248 PU\_2015\_152

Most viral capsids have:-

- 16 faces
- 08 faces
- 20 faces
- 12 faces

**70 of 100**

249 PU\_2015\_152

NaCl can acts as:-

- (a) antagonist at optimal concentrations
- (b) synergistically if added in excess of optimum level
- (c) Both (a) and (b)
- (d) None of the above

**71 of 100**

250 PU\_2015\_152

Hemicelluloses are:-

- Polymer of cellulose
- Isomers of cellulose
- Polymer of Talose
- Derivatives of cellulose

**72 of 100**

242 PU\_2015\_152

Cosmids lack:-

- origin of replication
- genes coding for viral proteins
- marker genes coding for replication
- cleavage site for the insertion of foreign DNA

**73 of 100**

227 PU\_2015\_152

Which statement is true of glucokinase?

- It has a lower  $K_m$  for glucose than does hexokinase
- It catalyses the phosphorylation of fructose
- It is inhibited by glucose 6 phosphate
- It is found in the liver

#### 74 of 100

228 PU\_2015\_152

Which of the following contributes nitrogen atoms to both purine and pyrimidine:-

- Aspartate
- Carbomoyl phosphate
- Glutamine
- Carbon di oxide

#### 75 of 100

240 PU\_2015\_152

Which of the following is not true for the thermal resistance of the bacterial cells?

- Higher optimal and maximal temperatures for growth, higher the resistance
- Bacteria that clump considerably or form capsules are difficult to kill
- Cocci are usually more resistant than rods
- Cells low in lipid content are harder to kill than other cells

#### 76 of 100

246 PU\_2015\_152

The spindle forms in the:-

- S phase
- $G_2$  phase
- M phase
- $G_1$  phase

#### 77 of 100

225 PU\_2015\_152

Heterotrophic Enzymes are:-

- Have same  $V_{max}$  but different  $K_m$  values
- Modified by their substrate concentration
- Different Isoenzymes
- Stimulated or inhibited by an effector or modulator molecule

#### 78 of 100

247 PU\_2015\_152

The major protein in corn is:-



- Zein
- Hordenin
- Glutenin
- Oryzenin

### 79 of 100

226 PU\_2015\_152

In pentose phosphate pathway:-

- Only the C1 carbon of glucose is oxidized to CO<sub>2</sub>
- All the carbons of glucose are oxidized to CO<sub>2</sub>
- C<sub>4</sub> and C<sub>5</sub> of glucose are oxidized to CO<sub>2</sub>
- No decarboxylation occurs

### 80 of 100

229 PU\_2015\_152

Plastocyanin is a mobile electron carrier between:-

- Oxygen evolving complex and PS11
- Cytochrome bf complex and PS1
- PS1 and ferridoxin
- PS11 and Cytochrome bf complex

### 81 of 100

291 PU\_2015\_152

The % Daily Value is based on a \_\_\_\_\_ calorie diet.

- 2000
- 2500
- 3000
- 3500

### 82 of 100

270 PU\_2015\_152

Allosteric enzymes have modulators for:-

- Activation only
- Inhibition only
- Both activation and inhibition
- Reduction in activation energy

### 83 of 100

296 PU\_2015\_152

Adulteration of edible oil by mineral oil can b identified by:-

- Boudin's test
- Holde's test
- Halman's test
- Carl's test

**84 of 100**

273 PU\_2015\_152

ELISA test is used for:-

- Protein testing
- Purity testing
- Separate viral RNA
- Isolate DNA sequence

**85 of 100**

263 PU\_2015\_152

Which of the following enzyme is not protein in nature?

- Trypsin
- Hexokinase
- Ribozyme
- None of the above

**86 of 100**

278 PU\_2015\_152

Which of the following is called as the Anthony's fire?

- Aflatoxin infection
- Botulism
- Fumonisin infection
- Ergotism

**87 of 100**

271 PU\_2015\_152

At temperature near freezing point, the enzymes are:-

- Inactivated
- Activated
- Slightly activated
- Denatures

**88 of 100**

262 PU\_2015\_152

The net yield of ATPs in complete oxidation of glucose in aerobic respiration is:-

- 8
- 40
- 38
- 6

**89 of 100**

294 PU\_2015\_152

Aflatoxin M is found in:-

- Milk
- Groundnut
- Wheat
- Soybean

**90 of 100**

260 PU\_2015\_152

Fiske and Rao method is used for the estimation of:-

- Pectin
- Phosphorous
- Pentathonic acid
- Phytates

**91 of 100**

274 PU\_2015\_152

Which one yield maximum energy?

- Anaerobic respiration
- Glycolysis
- Aerobic respiration
- Krebs Cycle

**92 of 100**

292 PU\_2015\_152

Water functions in the body to:-

- Serve as a medium for chemical reactions
- Dissolve oxygen
- Induce glycogen
- Moderate metabolism

**93 of 100**

295 PU\_2015\_152

Roquefortine is:-

- Bacterial toxin
- Antinutritional factor
- A fermented product
- Mycotoxin

**94 of 100**

277 PU\_2015\_152

End product of  $\beta$ -oxidation of fatty acids is:-

- Acetyl co A
- $\text{CO}_2$  and  $\text{H}_2\text{O}$
- Acetone
- ATP

**95 of 100**

275 PU\_2015\_152

Salivary pH is:-

- 3.5
- 9.4
- 7.1
- 5.6

**96 of 100**

293 PU\_2015\_152

A calorie is the amount of energy required to raise \_\_\_\_\_ of water one degree \_\_\_\_\_.

- 1 pound, Centigrade
- 1 ounce, Fahrenheit
- 1 gram, Centigrade
- 1 kilo, Fahrenheit

**97 of 100**

290 PU\_2015\_152

Palatinose is isomer of sucrose and differ from it having:-

- $\beta$ -1,6-glycosidic bond
- $\alpha$ -1,6-glycosidic bond
- $\beta$ -1,2-glycosidic bond
- $\alpha$ -1,4-glycosidic bond

**98 of 100**

272 PU\_2015\_152

Enzymes functional in cells are called:-

- Apoenzyms
- Isoenzymes
- Endoenzymes
- Exoenzymes

**99 of 100**

276 PU\_2015\_152

Blocking enzyme action through blocking its active site is:-

- Competitive inhibition
- Allosteric inhibition
- Feedback inhibition
- Non competitive inhibition

**100 of 100**

261 PU\_2015\_152

A reduced compound is:-

- NADH
- ADP
- NAD
- FAD