

## PU Ph D Food Science and Technology

### 1 of 100

201 PU\_2015\_158

Which involves achieving growth dry selling more of our existing products in existing markets?

- Product development
- Market penetration
- Market development
- Diversification

### 2 of 100

123 PU\_2015\_158

Cinnamyl esterase activity in white wine contributes to the:-

- Hydrolysis of pectin
- Hydrolysis of coumaric and ferulic acid
- Hydrolysis of polyphenol
- Hydrolysis of rhamnogalacturonan

### 3 of 100

135 PU\_2015\_158

Genes involved in nitrogen fixation:-

- nix gene
- nit gene
- nif gene
- nfi gene

### 4 of 100

208 PU\_2015\_158

If permanent preservation is to occur, food must be protected from \_\_\_\_\_.

- Dust
- Contamination
- Recontamination
- Spoilage

### 5 of 100

128 PU\_2015\_158

pH of egg yolk:-

- 7.0-7.5
- 5.5-5.8
- 6.0-6.3

6.5-7.0

**6 of 100**

165 PU\_2015\_158

Natural convectonal heat transfer is characterized by:-

- Peclet number
- Grashhoff number
- Prandtl number
- Reynolds number

**7 of 100**

204 PU\_2015\_158

The descriptions dimensions, specifications, calculations and so forth, are placed in a formal document and assigned a document control number.

- Final engineering
- Determine the impact of environment
- Communication of the design
- Constraints

**8 of 100**

151 PU\_2015\_158

Which of the following is a renewable energy source?

- Solar Energy
- Natural Gas
- Coal
- Bitumen

**9 of 100**

183 PU\_2015\_158

N-acyl derivatives of nuraminic acid are generally called:-

- Phytic acid
- Sialic acid
- Uronic acid
- Muramic acid

**10 of 100**

198 PU\_2015\_158

Eugenol is the principal component of:-

- coriander
- cassia

- clove
- cardamom

**11 of 100**

155 PU\_2015\_158

Among the following, which is most important for carrying out a material balance?

- Waste Quantity
- Pressure
- Temperature of Products
- Mass

**12 of 100**

196 PU\_2015\_158

Pekoe is a:-

- Method of rolling
- Leaf grade
- Broken grade
- None

**13 of 100**

122 PU\_2015\_158

Which of following is anomeric pair?

- $\alpha$ -D-glucose and  $\beta$ -D-glucose
- D-glucose and D-fructose
- D-glucose and L-glucose
- $\alpha$ -D-glucose and  $\beta$ -L-glucose

**14 of 100**

203 PU\_2015\_158

\_\_\_\_\_ is the act of developing an ideal scheme or plan of action.

- Evaluation of proposal solution
- Identification of constraints
- Component requirement
- Conceptualization

**15 of 100**

113 PU\_2015\_158

What are the components of ceramide?

- Sphingosine+ fatty acid + phosphoric acid
- Sphingosine + fatty acid + phosphoric acid + nitrogenous base

- Sphingosine + fatty acid
- Glycerol + fatty acid + phosphoric acid

### 16 of 100

142 PU\_2015\_158

If a purine base is substituted by a pyrimidine or viceversa the substitution is called:-

- Transition
- Mutation
- Transversion
- Transformation

### 17 of 100

121 PU\_2015\_158

The typical cyclical structure of Glucose is  $\alpha$  and  $\beta$  D:-

- Glucoside
- Glucosamine
- Glucofuranose
- Glucopyranose

### 18 of 100

125 PU\_2015\_158

In Photosynthetic bacteria, photosynthesis takes place in:-

- Chromatophores
- Thylakoids
- Chloroplast
- Chlorophyll

### 19 of 100

168 PU\_2015\_158

For an ideal gas, the compressibility factor:-

- Is unity at all temperature
- Decreases with pressure rise
- Is unity at Boyle's temperature
- Zero

### 20 of 100

129 PU\_2015\_158

An artificial inducer commonly used in experimental work is:-

- $\beta$ -galactosidase
- Calcium chloride

- Isopropyl thio galactoside (IPTG)
- X-gal

**21 of 100**

106 PU\_2015\_158

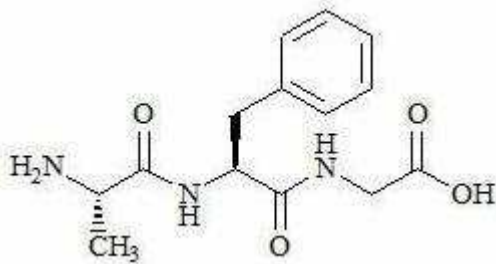
What is invert sugar, and why is it so named?

- sugar mixture from hydrolysis of starch;  $\alpha$ -glycosidic bonds are changed to  $\beta$ -glycosidic bonds
- the sugar mixture from hydrolysis of sucrose; the optical rotation changes from (+) to (-)
- the sugar mixture from hydrolysis of sucrose; fructose is isomerized to glucose
- the sugar mixture from hydrolysis of starch; glucose is isomerized to fructose

**22 of 100**

112 PU\_2015\_158

Identify the correct name for the following peptide.



- glycyl-L-phenylalanyl-L-alanine
- L-phenylalanyl-L-alanyl-glycine
- L-alanyl-L-phenylalanyl-glycine
- L-alanyl-glycyl-L-phenylalanine

**23 of 100**

143 PU\_2015\_158

The first mycotoxin recognized as affecting human beings:-

- Shiga toxin
- Ergot
- Pertussis
- $\alpha$  toxin

**24 of 100**

209 PU\_2015\_158

\_\_\_\_\_ objective method for measuring volatile flavouring compounds in food products.

- Hunter meter
- Volatile meter

- Long sought meter
- Mechanical meter

### 25 of 100

182 PU\_2015\_158

The Chief spoilage organism on smoked fish are:-

- Mold
- Bacteria
- Both Mold & bacteria
- Fungi

### 26 of 100

124 PU\_2015\_158

The enzyme involved in enzymatic browning reactions is:-

- Laccases
- Diphenol hydrases
- Polyphenol oxidases
- Polyphenol hydrolases

### 27 of 100

207 PU\_2015\_158

\_\_\_\_\_ is referred to conducting an analysis to determine better the context of your product or package in a new market.

- Contextual analysis
- Structural specifications
- Dynamic status evaluation
- Concept selection

### 28 of 100

114 PU\_2015\_158

Which of the following statements is untrue about protein secondary structure?

- The ability of peptide bonds to form intramolecular hydrogen bonds is important to secondary structure.
- The alpha helix, beta pleated sheet and beta turns are examples of protein secondary structure.
- The hydrophilic/hydrophobic character of amino acid residues is important to secondary structure.
- The steric influence of amino acid residues is important to secondary structure.

### 29 of 100

138 PU\_2015\_158

The food that readily spoil unless special preservative methods are used, classified under:-

- Perishable foods

- Semi perishable foods
- Stable foods
- Non perishable foods

**30 of 100**

136 PU\_2015\_158

Among the following microorganism complete pathway of glucose to lactic acid is found only in:-

- Bifidiobacterium
- Lactobacillus
- Lactococcus
- Leuconostoc

**31 of 100**

181 PU\_2015\_158

Meat of goat is called:-

- Mutton
- Chevon
- Hog
- Veal

**32 of 100**

152 PU\_2015\_158

Greenhouse effect refers to increase in:-

- Greenery
- Carbon monoxide
- Global temperature
- Atmospheric pressure

**33 of 100**

144 PU\_2015\_158

Colonies resembling molar teeth are produced by:-

- Nocardia brasiliensis
- Actinomadura madurae
- Nocardia asteroides
- Actinomyces israelii

**34 of 100**

199 PU\_2015\_158

Nigerose is a:-

- Trisaccharide

- Polysaccharide
- Disaccharide
- Monosaccharide

**35 of 100**

154 PU\_2015\_158

When heat is added or removed, resulting in a change of temperature is called as:-

- Latent heat
- Sensible heat
- Heat capacity
- Specific heat

**36 of 100**

150 PU\_2015\_158

Pasteurization temperature of milk:-

- 62 C
- 72 C
- 82 C
- 52 C

**37 of 100**

167 PU\_2015\_158

Respiratory Quotient RQ is a measure of:-

- Amount of  $O_2$  formed / gram of substrate feed
- Amount of  $CO_2$  formed / gram of substrate feed
- Amount of  $CO_2$  formed/ gram of  $O_2$  feed
- None of the above

**38 of 100**

141 PU\_2015\_158

Antibiotic Gramicidin S is obtained from the bacterium:-

- Bacillus cereus
- Bacillus licheniformis
- Bacillus subtilis
- Bacillus brevis

**39 of 100**

153 PU\_2015\_158

Cane sugar is \_\_\_\_\_ and milk sugar is \_\_\_\_\_.

- Lactose and sucrose



- Sucrose and lactose
- Glucose and sucrose
- Lactose and Maltose

**40 of 100**

184 PU\_2015\_158

Starch used in frozen food should contain:-

- Amylose content dose does not make any difference
- Less amylopectin
- High amylose
- Less amylose

**41 of 100**

205 PU\_2015\_158

\_\_\_\_\_ the laboratory studies are undertaken during which environmental conditions are accelerated by a known factor, so that the product deteriorates at a faster than normal rates.

- Shelf life prototype
- Accelerated shelf life testing
- Shelf life of existing products
- Endpoint study

**42 of 100**

173 PU\_2015\_158

Peclet number (Pe) is given by:-

- $Pe = Re Pr$
- $9Pe = Nu Re$
- $Pe = Pr/Re$
- $Pe = Re/Pr$

**43 of 100**

174 PU\_2015\_158

Grashhoff number is:-

- $\mu^2 / \beta g \Delta t l^2 \rho^3$
- $\beta g \Delta t l^2 \rho^3 / \mu^2$
- $\beta g \Delta t l^3 \rho^2 / \mu^2$
- $\mu^2 / \beta g \Delta t l^3 \rho^2$

**44 of 100**

127 PU\_2015\_158

A chemical substance resembling a base is called a:-

- Base strategy
- Base substance
- Base analogues
- Base molecule

**45 of 100**

197 PU\_2015\_158

Tomato ketchup is a type of \_\_\_\_\_ fluid.

- Bingham plastic
- Newtonian
- Dilatent
- Plastic

**46 of 100**

139 PU\_2015\_158

The proteins in combination with prosthetic group like pigment is:-

- Lipoprotein
- Chromoprotein
- Phosphoprotein
- Metalloprotein

**47 of 100**

172 PU\_2015\_158

Luedeking – Pircet equation is his study of:-

- Product formation kinetics
- Oxygen utilization kinetics
- Substrate utilization
- None of the above

**48 of 100**

137 PU\_2015\_158

Anaerobic decomposition of proteins, peptides or aminoacids results in the production of obnoxious odours and is then called:-

- Deamination
- Denitrification
- Putrefaction

Nitrification

**49 of 100**

111 PU\_2015\_158

Which of the following molecules is involved in the feedback control of the enzyme phosphorylase a?

glucose-1-phosphate

AMP

adrenaline'

glycogen

**50 of 100**

126 PU\_2015\_158

Psoralens are:-

Food additives

Digestive compound

Food allergens

Natural toxicans

**51 of 100**

108 PU\_2015\_158

Which of the following statements most correctly defines the isoelectric point?

the pH at which all molecular species are neutral and uncharged.

the pH at which negatively and positively charged molecular species are present in equal concentration.

the pH at which all molecular species are ionized and that carry the same charge.

the pH at which half the molecular species are ionized (charged) and the other half unionized.

**52 of 100**

171 PU\_2015\_158

hd/k is called:-

Grashhoff number

Schmidt number

Rayleigh number

None of these

**53 of 100**

206 PU\_2015\_158

The average length of time that a product spends on the retail shelf is found by monitoring sales from retails outlets and from this the required shelf life is estimated.

Processing pavameters

Turnover time

- Literature study
- Newly developed products Turnover time

**54 of 100**

107 PU\_2015\_158

A disaccharide formed by 1,1-glycosidic linkage between their monosaccharide units is:-

- Lactose
- Sucrose
- Maltose
- Trehalose

**55 of 100**

105 PU\_2015\_158

An example of sulphur containing amino acid is:-

- 2-Amino-3-methylbutanoic acid
- 2-Amino-3-mercaptopropanoic acid
- 2-Amino-3-hydroxypropanoic acid
- Amino acetic acid

**56 of 100**

195 PU\_2015\_158

Enthalpy of the product is \_\_\_\_\_ on freezing.

- Increases and Decreases
- Decreases
- Remain same
- Increases

**57 of 100**

169 PU\_2015\_158

Unit of mass velocity is:-

- Kg/hr
- Kg/m hr
- Kg/m<sup>2</sup>
- Kg/m<sup>2</sup> hr

**58 of 100**

109 PU\_2015\_158

Identify the strongest form of intermolecular bonding that could be formed involving the residue of the amino acid serine.

- ionic bond

- hydrogen bond
- van der Waals interactions
- none of the above

**59 of 100**

202 PU\_2015\_158

\_\_\_\_\_ is a newly packaged and labelled form of existing products prompted through new advertising strategies.

- Creative products
- Line extension
- Reformulate the existing products
- Repositioned existing products

**60 of 100**

166 PU\_2015\_158

Fruit juice can be concentrated in a:-

- High pressure evaporator
- Long tube evaporator
- Falling film evaporator
- None of these

**61 of 100**

230 PU\_2015\_158

Modification of starch may affect:-

- Viscosity
- Gelatinization and heating time
- Freezing stability and cold water stability
- All of the above

**62 of 100**

226 PU\_2015\_158

Which of the following pair of carbohydrates are anomers of each other?

- $\alpha$ - Glucose and  $\beta$ -Fructose
- $\alpha$ - Glucose and  $\beta$ -Glucose
- $\alpha$ - Glucose and  $\alpha$ - Mannose
- All of the above

**63 of 100**

231 PU\_2015\_158

Enzymes are:-

- carbohydrates
- DNA molecule
- proteins
- nucleic acids

**64 of 100**

252 PU\_2015\_158

Richest source of Riboflavin is:-

- Mango
- Bael
- Papaya
- Karonda

**65 of 100**

229 PU\_2015\_158

Carbonation in soft drinks is commonly achieved by adding:-

- carbon dioxide
- sodium carbonate
- calcium carbonate
- sodium bicarbonate

**66 of 100**

243 PU\_2015\_158

Fats are abundantly found in:-

- a) Reproductive tissue
- b) Vegetative tissue
- c) Both (a) and (b)
- d) None of these

**67 of 100**

253 PU\_2015\_158

Soft dough is due to:-

- High temperature
- Low temperature
- Below normal temperature
- Normal temperature

**68 of 100**

251 PU\_2015\_158

Which refrigerant is commonly is used in cold storage in our country?

- Ammonia
- Carbide
- Sodium benzoate
- Ethylene

**69 of 100**

235 PU\_2015\_158

Amino acids are joined by:-

- peptide bond
- glycosidic bond
- hydrogen bond
- ionic bond

**70 of 100**

225 PU\_2015\_158

Vegetable oils are rich in:-

- $\omega$ -3 fatty acids
- $\omega$ -6 fatty acids
- $\omega$ -5 fatty acids
- $\omega$ -4 fatty acids

**71 of 100**

254 PU\_2015\_158

What is the ratio of flour, fat, salt and water in the preparation of water biscuits and matzos?

- 100 : 6.5 : 1 : 29
- 70 : 6.5 : 1 : 15
- 90 : 7.5 : 1 : 25
- 80 : 6.5 : 1 : 20

**72 of 100**

227 PU\_2015\_158

Richest source of B12:-

- Goat liver and Spirulina
- Chocolate and green grains
- Rice and egg
- Carrot and chicken breast

**73 of 100**

234 PU\_2015\_158

What is phytic acid?

- Hexaphosphoric acid of inositol
- Potassium salt of hexaphosphoric acid
- Phosphorous associated with mannitol
- None of the above

**74 of 100**

241 PU\_2015\_158

Liquid form of triglycerides at ordinary room temperature are called:-

- Fats
- Oils
- Solid
- None of these

**75 of 100**

242 PU\_2015\_158

Iodine value measures:-

- Degree of saturation
- Amount of carbon present
- Degree of unsaturation
- Degree of oxidation

**76 of 100**

233 PU\_2015\_158

HTST milk is milk that has been processed using \_\_\_\_\_~. procedures.

- homogenous tempering short time
- hot temperature short tempering
- high temperature short time
- homogenization time scalding temperature

**77 of 100**

245 PU\_2015\_158

F good gels are examples of:-

- Plastic solids
- Gels are not solids
- Elastic solids
- None of the above

**78 of 100**

228 PU\_2015\_158

A dipeptide has:-



- 2 amino acids and 3 peptide bonds
- 2 amino acids and 2 peptide bonds
- 2 amino acids and 4 peptide bonds
- 3 amino acids and 3 peptide bonds

**79 of 100**

244 PU\_2015\_158

Reynolds number is:-

- Ratio b/w inertial force and pressure
- Ratio b/w viscous force and pressure difference
- Ratio b/w inertial force and viscous force
- Ratio b/w viscous force and inertial force

**80 of 100**

232 PU\_2015\_158

The primary structure of protein represents:-

- 3-dimensional structure of protein
- sub unit structure of protein
- helical structure of protein
- Linear sequence of amino acids joined by peptide bond

**81 of 100**

281 PU\_2015\_158

Which of the following cells secretes Eselectins?

- Microglial cells
- Eosinophils
- Endothelial cells
- Epithelial cells

**82 of 100**

282 PU\_2015\_158

Bovine keratitis is caused by:-

- Bacteroides*
- Staphylococcus*
- Bordetellapertosis*
- Morexellabovis*

**83 of 100**

287 PU\_2015\_158

The micro-organism which is present in both fresh and frozen juices is:-

- P. chrysogenum*
- E. coli*
- Enterobacteraerogenes*
- None of these

**84 of 100**

277 PU\_2015\_158

Sources of lead in our environment are:-

- fillings for teeth, refrigerators, crystal glassware, oil paintings
- x-ray shielding, fillings for teeth, automobile paint, bathroom fixtures
- paint, crystal glassware, old water pipes, PVC pipes
- paint, x-ray shielding, old water pipes, residue from leaded gasoline

**85 of 100**

278 PU\_2015\_158

In the US, the percentage of traffic deaths that are alcohol related is:-

- 20%
- 75%
- 10%
- 40%

**86 of 100**

272 PU\_2015\_158

Bond involved in the dough of the flour is/are:-

- Hydrogen bond
- Covalant bond
- Hydrophobic bond
- All of the above

**87 of 100**

271 PU\_2015\_158

Vacuum cooling is most suitable for:-

- Leafy vegetables
- Tubers
- Fruits
- None of these

**88 of 100**

299 PU\_2015\_158

Arrange the potencies of toxin in descending order of the following canned foods:-

- corn> peas>string beans>spinach
- peas>string beans>spinach> corn
- corn> spinach> peas>string beans
- corn> string bean>peas>spinach

**89 of 100**

280 PU\_2015\_158

A bright red lividity indicates:-

- cyanide poisoning
- carbon monoxide poisoning
- strychnine poisoning
- arsenic poisoning

**90 of 100**

279 PU\_2015\_158

A spot test can be used to determine:-

- whether a particular white powder is casine
- whether a particular white powder is cocaine
- whether a particular white powder is not cocaine
- whether a particular white powder is protin

**91 of 100**

297 PU\_2015\_158

The production of acetic acid from ethanol is an:-

- anaerobic process
- aerobic process
- both anaerobic & aerobic
- neither anaerobic nor aerobic

**92 of 100**

286 PU\_2015\_158

Anthrachnose is a defect which can be observed as:-

- spotting of leaves
- spotting of seedpods
- spotting of fruits
- all of these

**93 of 100**

284 PU\_2015\_158

What is meant by the therapeutic ratio or index?

- The ratio of LD<sub>50</sub> to ED<sub>99</sub>
- The ratio of ED<sub>99</sub> to ED<sub>5</sub>
- The ratio of LD<sub>50</sub> to ED<sub>50</sub>
- The ratio of LD<sub>1</sub> to LD<sub>5</sub>

**94 of 100**

273 PU\_2015\_158

Best maturity indices of orange is:-

- Sugar %
- TSS
- Acid %
- Brix : acid ratio

**95 of 100**

296 PU\_2015\_158

The organism *B. brevis* can be used commercially for the production of:-

- tyrocidin
- tyrothricin (bacitracin tyrocidin complex)
- gramicidin A
- all of the above

**96 of 100**

276 PU\_2015\_158

Which of the following is NOT a narcotic?

- Fentanyl
- Ecstasy
- Heroin
- All of these are narcotics

**97 of 100**

298 PU\_2015\_158

Vinegar is a fermentation derived food product containing not less than:-

- 25% acetic acid
- 6% acetic acid
- 15% acetic acid
- 4% acetic acid

**98 of 100**

274 PU\_2015\_158

Cherry coffee is obtained by:-

- Chemical treatment
- Wet processing
- Vacuum processing
- Dry processing

**99 of 100**

283 PU\_2015\_158

In which of the following the enzyme substrate complex is irreversible in nature?

- Both Competitive & Non- competitive inhibition
- Un Competitive inhibition
- Non- Competitive inhibition
- Competitive inhibition

**100 of 100**

288 PU\_2015\_158

The spoilage of eggs by fungi goes through stages of mold growth that give the defects their names. Very early mold growth is termed:-

- bacterias spot
- superficial fungal spoilage
- fungal rotting
- pin-spot molding